

SA Series

FEATURES

- Load Life 2000 hours at 85 °C
- Applications: Frequency converters, UPS and Electric welding machine
- Compliant to the RoHS directive

- 85°C 2000小时
- 应用：变频器、不间断电源和电焊机等
- RoHS指令对策品



◆规格表 SPECIFICATIONS

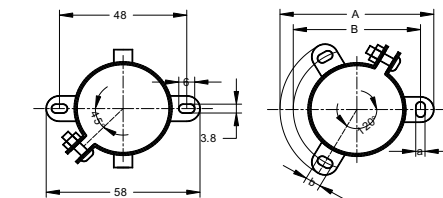
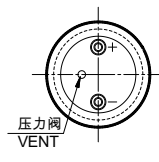
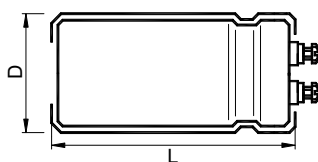
项目 Items	特性 Characteristics													
工作温度范围 Operating Temperature Range	- 40 ~ +85°C										25 ~ +85°C			
额定工作电压范围 Rated Working Voltage Range	10 ~ 250V										350 ~ 750V			
静电容量范围 Capacitance Range	820 ~ 820000µF													
静电容量允许偏差 Capacitance Tolerance	±20% (20°C, 120Hz)													
损耗角正切值 Dissipation Factor (MAX) 20°C , 120Hz	U _R (V)	10-100	160	200	250	350	400	450	500	550	600	650	700	750
	tanδ	见规格表	0.20			0.15			0.20			0.25		0.30
漏电流 Leakage Current (MAX)	I = 0.01C _R U _R 或 5mA 取小者 (20°C , 施加额定电压 5 分钟后) I = 0.01C _R U _R or 5mA whichever is minimum. (at 20°C , After 5 minutes application of rated voltage) I = 漏电流 (µA) U _R = 额定电压 (V) C _R = 静电容量 (µF) Leakage Current Rated Voltage Rated Capacitance													

	使用寿命 Useful Life		负荷寿命 Load Life	耐久性特性 Endurance Test	高温无负荷特性 Shelf Life	
产品寿命 Life Time	4000h	>65000h	2000h	2000h	1000h U _R ≤550V	500h U _R ≥600V
漏电流 Leakage Current	≤规定值 ≤Specified value		≤规定值 ≤Specified value	≤规定值 ≤Specified value	≤规定值 ≤Specified value	
损耗角正切值变化率 tanδ Change	≤规定值的 300% ≤300% of specified value		≤规定值的 175% ≤175% of specified value	≤规定值的 130% ≤130% of specified value	≤规定值的 150% ≤150% of specified value	
静电容量变化率 Capacitance Change	初始值±30%以内 Within±30% of initial value		初始值±15%以内 Within±15% of initial value	初始值±10%以内 Within±10% of initial value	初始值±15%以内 Within±15% of initial value	
施加条件 Condition 施加电压 Applied Voltage 施加纹波电流 Applied Ripple Current 环境温度 Applied Temperature 失效等级 Failure Rate Level	U _R I _R 85°C ≤1% Failure rate	U _R 1.2×I _R 40°C ≤1% Failure rate	U _R I _R 85°C 0%	U _R I _R =0 85°C 0%	U _R =0 I _R =0 85°C 0% Back up to 20 °C and placed more than 24 hours. U _R to be applied for 60 min before measurement.	

◆尺寸图 Dimensions

- 常用端子型式代码：Terminal Code

Ring Clip: T (Φ35 Standard) Ring Clip: S (Φ51-Φ100 Standard)



Ring Clip Dimensions:

ΦD	A	B	a	b
51	73.0	63.5	4.5	7
64	85.1	76.2	4.5	7
76	98.4	88.9	4.5	7
89	111.1	101.6	4.5	7
100	127.0	115.0	6.2	8

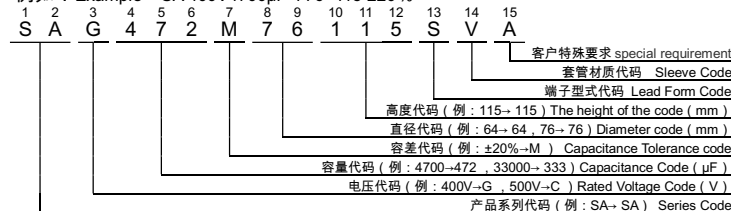
L-Type : Small terminal M5 thread

S-Type : Large terminal, if D:76-89mm, M6 thread, if D:100mm M8 thread

- 记载以外的端子形状，请另行咨询。Please consult to us for the terminal type not displayed in content.

◆产品编码体系 PART NUMBER SYSTEM

- 例如：Example SA 400V4700µF Φ76×115 ±20%



◆纹波电流修正系数 Rated Ripple Current Multiplies

- 频率修正系数 Frequency coefficient

电压范围 (v) Rated voltage	频率 (Hz) Frequency				
	50 (60)	100 (120)	300	1k	≥10k
10 ~ 50WV	0.95	1.00	1.04	1.10	1.15
63 ~ 100WV	0.95	1.00	1.06	1.16	1.30
160 ~ 500WV	0.80	1.00	1.10	1.25	1.50
550WV ~ 750WV	0.80	1.00	1.10	1.30	1.40

- 温度修正系数 Temperature coefficient

电压范围 (v) Rated voltage	温度 (°C) Temperature			
	+40	+60	+70	+85
10 ~ 500WV	2.70	2.00	1.70	1.00
550 ~ 750WV	1.89	1.67	—	1.00

SA Series

◆ 产品一览表 Standard Ratings

WV _{DC} (Surge Voltage) (V)	Cap (μ F)	Size D×L (mm)	tan δ 20°C/120Hz	Ripple Current 85°C/120Hz (Arms)	Catalog Part Number
10 (13)	33000	35×60	0.80	5.1	SAW333M35060□VA
	39000	35×60	0.80	5.6	SAW393M35060□VA
	47000	35×60	0.80	6.2	SAW473M35060□VA
	56000	35×80	0.80	7.3	SAW563M35080□VA
	68000	35×80	0.80	8.0	SAW683M35080□VA
	82000	35×100	0.80	9.2	SAW823M35100□VA
	100000	35×100	0.80	10.5	SAW104M35100□VA
	120000	35×120	0.80	12.0	SAW124M35120□VA
	150000	35×120	1.00	12.9	SAW154M35120□VA
	180000	51×95	1.00	13.4	SAW184M51095□VA
	220000	51×115	1.50	14.4	SAW224M51115□VA
	270000	51×115	1.50	15.3	SAW274M51115□VA
	330000	64×95	1.50	18.3	SAW334M64095□VA
	390000	64×115	1.50	20.7	SAW394M64115□VA
	470000	64×130	2.00	20.2	SAW474M64130□VA
	560000	76×115	2.00	22.8	SAW564M76115□VA
680000	76×130	2.00	26.0	SAW684M76130□VA	
820000	76×155	2.00	29.5	SAW824M76155□VA	
16 (20)	22000	35×60	0.60	4.9	SAV223M35060□VA
	27000	35×60	0.60	5.4	SAV273M35060□VA
	33000	35×60	0.60	6.0	SAV333M35060□VA
	39000	35×60	0.60	7.1	SAV393M35060□VA
	47000	35×80	0.60	7.6	SAV473M35080□VA
	56000	35×80	0.60	8.7	SAV563M35080□VA
	68000	35×100	0.60	10.0	SAV683M35100□VA
	82000	35×100	0.80	9.9	SAV823M35100□VA
	100000	35×120	0.80	11.5	SAV104M35120□VA
	120000	35×120	0.80	13.0	SAV124M35120□VA
	150000	51×95	1.00	13.5	SAV154M51095□VA
	180000	51×115	1.00	14.0	SAV184M51115□VA
	220000	51×130	1.00	18.3	SAV224M51130□VA
	270000	64×95	1.00	19.3	SAV274M64095□VA
	330000	64×115	1.50	18.4	SAV334M64115□VA
	390000	64×130	1.50	21.9	SAV394M64130□VA
470000	76×115	1.50	25.5	SAV474M76115□VA	
560000	76×130	1.50	28.3	SAV564M76130□VA	
680000	76×155	1.50	33.1	SAV684M76155□VA	
820000	89×157	2.00	32.5	SAV824M89157□VA	
25 (32)	15000	35×60	0.50	4.4	SAU153M35060□VA
	18000	35×60	0.50	4.9	SAU183M35060□VA
	22000	35×60	0.50	5.4	SAU223M35060□VA
	27000	35×60	0.50	6.0	SAU273M35060□VA
	33000	35×80	0.50	7.1	SAU333M35080□VA
	39000	35×80	0.50	8.0	SAU393M35080□VA
	47000	35×100	0.50	9.2	SAU473M35100□VA
	56000	35×100	0.60	9.4	SAU563M35100□VA
	68000	35×120	0.60	11.0	SAU683M35120□VA
	82000	35×120	0.60	12.4	SAU823M35120□VA
	100000	51×95	0.60	12.9	SAU104M51095□VA
	120000	51×115	0.80	14.5	SAU124M51115□VA
	150000	51×130	0.80	16.9	SAU154M51130□VA
	180000	64×95	0.80	18.8	SAU184M64095□VA
	220000	64×115	1.00	19.3	SAU224M64115□VA
	270000	64×130	1.00	22.3	SAU274M64130□VA
330000	64×150	1.00	26.3	SAU334M64150□VA	
390000	76×115	1.20	26.5	SAU394M76115□VA	
470000	76×155	1.20	30.2	SAU474M76155□VA	
560000	89×130	1.20	32.9	SAU564M89130□VA	
25(32)	680000	89×157	1.20	38.3	SAU684M89157□VA
	10000	35×60	0.40	3.9	SAT103M35060□VA
	12000	35×60	0.40	4.2	SAT123M35060□VA
	15000	35×60	0.40	4.8	SAT153M35060□VA
	18000	35×80	0.40	5.4	SAT183M35080□VA
	22000	35×80	0.40	6.5	SAT223M35080□VA
	27000	35×100	0.40	7.2	SAT273M35100□VA
	33000	35×100	0.40	8.2	SAT333M35100□VA
	39000	35×120	0.50	9.5	SAT393M35120□VA
	47000	51×95	0.50	10.0	SAT473M51095□VA
	56000	51×95	0.60	9.8	SAT563M51095□VA
	68000	51×115	0.60	11.2	SAT683M51115□VA
	82000	64×95	0.60	13.3	SAT823M64095□VA
	100000	64×115	0.60	15.3	SAT104M64115□VA
	120000	64×115	0.80	17.0	SAT124M64115□VA
	150000	64×130	0.80	17.1	SAT154M64130□VA
180000	76×115	0.80	19.5	SAT184M76115□VA	
220000	76×130	0.80	23.0	SAT224M76130□VA	
270000	76×155	1.00	23.3	SAT274M76155□VA	
330000	89×130	1.00	27.0	SAT334M89130□VA	
390000	89×157	1.00	30.3	SAT394M89157□VA	
470000	89×157	1.00	33.9	SAT474M89157□VA	
50 (63)	5600	35×60	0.30	3.4	SAR562M35060□VA
	6800	35×60	0.30	3.7	SAR682M35060□VA
	8200	35×60	0.30	4.1	SAR822M35060□VA
	10000	35×60	0.30	4.6	SAR103M35060□VA
	12000	35×80	0.30	5.4	SAR123M35080□VA
	15000	35×80	0.30	6.3	SAR153M35080□VA
	18000	35×100	0.30	7.1	SAR183M35100□VA
	22000	35×120	0.40	7.2	SAR223M35120□VA
	27000	35×120	0.40	8.1	SAR273M35120□VA
	33000	51×95	0.40	9.4	SAR333M51095□VA
	39000	51×95	0.50	9.3	SAR393M51095□VA
	47000	51×115	0.50	10.7	SAR473M51115□VA
	56000	64×95	0.50	12.0	SAR563M64095□VA
	68000	64×95	0.50	13.8	SAR683M64095□VA
	82000	64×115	0.50	15.7	SAR823M64115□VA
	100000	76×115	0.60	16.9	SAR104M76115□VA
120000	76×115	0.60	19.2	SAR124M76115□VA	
150000	76×130	0.60	22.1	SAR154M76130□VA	
180000	76×155	0.60	25.1	SAR184M76155□VA	
220000	89×130	0.60	24.6	SAR224M89130□VA	
270000	89×157	0.60	28.6	SAR274M89157□VA	
63 (79)	3900	35×60	0.25	3.1	SAQ392M35060□VA
	4700	35×60	0.25	3.4	SAQ472M35060□VA
	5600	35×60	0.25	3.7	SAQ562M35060□VA
	6800	35×60	0.25	4.1	SAQ682M35060□VA
	8200	35×80	0.25	4.9	SAQ822M35080□VA
	10000	35×80	0.25	5.6	SAQ103M35080□VA
	12000	35×100	0.25	6.4	SAQ123M35100□VA
	15000	35×100	0.30	6.7	SAQ153M35100□VA
	18000	35×120	0.30	7.7	SAQ183M35120□VA
	22000	35×120	0.30	8.9	SAQ223M35120□VA
	27000	51×95	0.40	8.5	SAQ273M51095□VA
	33000	51×95	0.40	9.6	SAQ333M51095□VA
	39000	51×115	0.40	10.9	SAQ393M51115□VA
	47000	51×130	0.40	12.9	SAQ473M51130□VA
	56000	64×115	0.40	14.7	SAQ563M64115□VA

*产品编码中□内为产品端子引出型式代码
*□Enter the appropriate terminal code

SA Series

◆ 产品一览表 Standard Ratings

WV _{DC} (Surge Voltage) (V)	Cap (μ F)	Size D×L (mm)	tan δ 20°C/120Hz	Ripple Current 85°C/120Hz (Arms)	Catalog Part Number
63 (79)	68000	64×115	0.50	15.4	SAQ683M64115 □VA
	82000	64×130	0.50	16.0	SAQ823M64130 □VA
	100000	76×115	0.50	18.4	SAQ104M76115 □VA
	120000	76×130	0.50	20.9	SAQ124M76130 □VA
	150000	76×155	0.50	24.6	SAQ154M76155 □VA
	180000	89×130	0.60	24.6	SAQ184M89130 □VA
	220000	89×157	0.60	28.8	SAQ224M89157 □VA
80 (100)	3300	35×60	0.25	2.8	SAP332M35060 □VA
	3900	35×60	0.25	3.2	SAP392M35060 □VA
	4700	35×60	0.25	3.4	SAP472M35060 □VA
	5600	35×80	0.25	4.1	SAP562M35080 □VA
	6800	35×80	0.25	4.4	SAP682M35080 □VA
	8200	35×80	0.25	5.1	SAP822M35080 □VA
	10000	35×100	0.25	5.9	SAP103M35100 □VA
	12000	35×100	0.25	6.7	SAP123M35100 □VA
	15000	35×120	0.25	7.8	SAP153M35120 □VA
	18000	35×120	0.25	8.9	SAP183M35120 □VA
	22000	51×95	0.30	9.2	SAP223M51095 □VA
	27000	51×95	0.30	10.5	SAP273M51095 □VA
	33000	51×115	0.30	12.0	SAP333M51115 □VA
	39000	51×130	0.30	13.8	SAP393M51130 □VA
	47000	64×115	0.30	16.6	SAP473M64115 □VA
	56000	64×130	0.40	15.4	SAP563M64130 □VA
	68000	76×115	0.40	17.7	SAP683M76115 □VA
82000	76×130	0.40	19.9	SAP823M76130 □VA	
100000	76×155	0.40	23.1	SAP104M76155 □VA	
120000	89×130	0.40	24.6	SAP124M89130 □VA	
150000	89×157	0.40	29.0	SAP154M89157 □VA	
100 (125)	3300	35×60	0.25	2.9	SAO332M35060 □VA
	3900	35×80	0.25	3.3	SAO392M35080 □VA
	4700	35×80	0.25	3.8	SAO472M35080 □VA
	5600	35×100	0.25	4.3	SAO562M35100 □VA
	6800	35×100	0.25	5.0	SAO682M35100 □VA
	8200	35×120	0.25	5.6	SAO822M35120 □VA
	10000	35×120	0.25	6.5	SAO103M35120 □VA
	12000	51×80	0.25	7.0	SAO123M51080 □VA
	15000	51×95	0.25	7.7	SAO153M51095 □VA
	18000	51×115	0.25	9.1	SAO183M51115 □VA
	22000	51×130	0.25	11.0	SAO223M51130 □VA
	27000	64×115	0.25	12.6	SAO273M64115 □VA
	33000	64×130	0.25	13.1	SAO333M64130 □VA
	39000	76×115	0.25	14.7	SAO393M76115 □VA
	47000	76×130	0.35	15.7	SAO473M76130 □VA
	56000	76×155	0.35	17.6	SAO563M76155 □VA
	68000	89×130	0.35	20.7	SAO683M89130 □VA
82000	89×157	0.35	22.6	SAO823M89157 □VA	
100000	89×170	0.35	26.4	SAO104M89170 □VA	
160 (200)	3900	51×80	0.20	5.8	SAN392M51080 □VA
	4700	51×80	0.20	6.4	SAN472M51080 □VA
	5600	51×95	0.20	7.7	SAN562M51095 □VA
	6800	51×95	0.20	8.6	SAN682M51095 □VA
	8200	51×115	0.20	10.0	SAN822M51115 □VA
	10000	64×95	0.20	11.4	SAN103M64095 □VA
	12000	64×95	0.20	12.4	SAN123M64095 □VA
	15000	64×130	0.20	15.7	SAN153M64130 □VA
	18000	64×130	0.20	17.2	SAN183M64130 □VA
	22000	76×130	0.20	20.1	SAN223M76130 □VA
27000	76×130	0.20	22.2	SAN273M76130 □VA	

WV _{DC} (Surge Voltage) (V)	Cap (μ F)	Size D×L (mm)	tan δ 20°C/120Hz	Ripple Current 85°C/120Hz (Arms)	Catalog Part Number
160 (200)	33000	89×130	0.20	26.2	SAN333M89130 □VA
	39000	89×157	0.20	30.7	SAN393M89157 □VA
	47000	89×170	0.20	34.9	SAN473M89170 □VA
	56000	89×195	0.20	38.1	SAN563M89195 □VA
	68000	89×220	0.20	40.3	SAN683M89220 □VA
	200 (250)	2200	35×100	0.20	3.9
2700		35×120	0.20	4.7	SAL272M35120 □VA
3300		51×80	0.20	5.3	SAL332M51080 □VA
3900		51×80	0.20	5.7	SAL392M51080 □VA
4700		51×95	0.20	6.4	SAL472M51095 □VA
5600		51×115	0.20	7.6	SAL562M51115 □VA
6800		51×130	0.20	8.8	SAL682M51130 □VA
8200		64×95	0.20	9.4	SAL822M64095 □VA
10000		64×95	0.20	10.5	SAL103M64095 □VA
12000		76×95	0.20	12.1	SAL123M76095 □VA
15000		76×95	0.20	14.4	SAL153M76095 □VA
18000		76×130	0.20	16.5	SAL183M76130 □VA
22000		76×155	0.20	19.6	SAL223M76155 □VA
27000		89×130	0.20	21.5	SAL273M89130 □VA
33000		76×170	0.20	24.0	SAL333M76170 □VA
33000		89×160	0.20	25.5	SAL333M89160 □VA
36000		89×160	0.20	26.8	SAL363M89160 □VA
47000	89×195	0.20	35.1	SAL473M89195 □VA	
56000	89×220	0.20	39.1	SAL563M89220 □VA	
68000	100×220	0.20	47.5	SAL683M00220 □VA	
250 (300)	1800	35×100	0.20	3.8	SAJ182M35100 □VA
	2200	51×80	0.20	4.4	SAJ222M51080 □VA
	2700	51×80	0.20	5.0	SAJ272M51080 □VA
	3300	51×95	0.20	5.9	SAJ332M51095 □VA
	3900	51×115	0.20	6.9	SAJ392M51115 □VA
	4700	64×95	0.20	7.8	SAJ472M64095 □VA
	5600	64×95	0.20	8.6	SAJ562M64095 □VA
	6800	64×115	0.20	10.0	SAJ682M64115 □VA
	8200	64×115	0.20	11.0	SAJ822M64115 □VA
	10000	64×130	0.20	12.9	SAJ103M64130 □VA
	12000	76×115	0.20	14.3	SAJ123M76115 □VA
	15000	76×130	0.20	16.6	SAJ153M76130 □VA
18000	76×155	0.20	19.5	SAJ183M76155 □VA	
22000	89×160	0.20	23.2	SAJ223M89160 □VA	
33000	89×170	0.20	29.4	SAJ333M89170 □VA	
47000	89×235	0.20	39.6	SAJ473M89235 □VA	
56000	100×235	0.20	44.6	SAJ563M00235 □VA	
350 (400)	1500	51×95	0.15	5.4	SAH152M51095 □VA
	1800	51×95	0.15	6.0	SAH182M51095 □VA
	2200	51×115	0.15	7.2	SAH222M51115 □VA
	2700	51×130	0.15	8.4	SAH272M51130 □VA
	3300	51×130	0.15	8.8	SAH332M51130 □VA
	3900	64×115	0.15	10.9	SAH392M64115 □VA
	4700	64×130	0.15	12.6	SAH472M64130 □VA
	5600	76×115	0.15	13.7	SAH562M76115 □VA
	6800	76×130	0.15	15.9	SAH682M76130 □VA
	8200	76×155	0.15	18.9	SAH822M76155 □VA
	10000	89×157	0.15	21.5	SAH103M89157 □VA
	12000	89×157	0.15	23.6	SAH123M89157 □VA
	15000	89×195	0.15	26.7	SAH153M89195 □VA
	18000	89×235	0.15	33.4	SAH183M89235 □VA
	18000	100×155	0.15	31.6	SAH183M00235 □VA
22000	100×220	0.15	34.5	SAH223M00220 □VA	
39000	100×237	0.15	47.6	SAH393M00237 □VA	

*产品编码中□内为产品端子引出型式代码

*□Enter the appropriate terminal code

SA Series

◆ 产品一览表 Standard Ratings

WV _{DC} (Surge Voltage) (V)	Cap (μ F)	Size D×L (mm)	tan δ 20°C/120Hz	Ripple Current 85°C/120Hz (Arms)	Catalog Part Number
400 (450)	820	35×100	0.15	3.5	SAG821M35100□VA
	1000	51×80	0.15	4.5	SAG102M51080□VA
	1200	51×80	0.15	4.9	SAG122M51080□VA
	1500	51×95	0.15	6.0	SAG152M51095□VA
	1800	51×95	0.15	6.5	SAG182M51095□VA
	2200	51×115	0.15	7.5	SAG222M51115□VA
	2200	64×80	0.15	7.3	SAG222M64080□VA
	2200	64×95	0.15	7.9	SAG222M64095□VA
	2700	64×95	0.15	9.8	SAG272M64095□VA
	2700	76×95	0.15	10.8	SAG272M76095□VA
	3300	64×105	0.15	10.1	SAG332M64105□VA
	3300	64×110	0.15	10.3	SAG332M64110□VA
	3300	64×115	0.15	10.5	SAG332M64115□VA
	3300	76×95	0.15	10.7	SAG332M76095□VA
	3900	64×130	0.15	12.0	SAG392M64130□VA
	3900	76×95	0.15	11.5	SAG392M76095□VA
	4700	76×115	0.15	13.8	SAG472M76115□VA
	5600	76×130	0.15	15.8	SAG562M76130□VA
	6800	76×145	0.15	17.2	SAG682M76145□VA
	6800	76×150	0.15	17.5	SAG682M76150□VA
	6800	76×155	0.15	17.8	SAG682M76155□VA
	6800	89×130	0.15	18.1	SAG682M89130□VA
8200	89×145	0.15	19.3	SAG822M89145□VA	
8200	89×157	0.15	20.0	SAG822M89157□VA	
10000	89×157	0.15	22.0	SAG103M89157□VA	
12000	89×195	0.15	25.0	SAG123M89195□VA	
15000	89×220	0.15	28.7	SAG153M89220□VA	
15000	89×235	0.15	29.5	SAG153M89235□VA	
18000	89×235	0.15	32.3	SAG183M89235□VA	
22000	100×237	0.15	34.9	SAG223M00237□VA	
450 (500)	820	51×80	0.15	4.1	SAE821M51080□VA
	1000	51×80	0.15	4.5	SAE102M51080□VA
	1200	51×95	0.15	5.3	SAE122M51095□VA
	1500	51×115	0.15	6.5	SAE152M51115□VA
	1800	51×130	0.15	7.3	SAE182M51130□VA
	2200	64×95	0.15	8.2	SAE222M64095□VA
	2700	64×115	0.15	9.9	SAE272M64115□VA
	3300	64×130	0.15	11.5	SAE332M64130□VA
	3900	76×115	0.15	13.1	SAE392M76115□VA
	4700	76×130	0.15	14.8	SAE472M76130□VA
	5600	76×155	0.15	17.4	SAE562M76155□VA
	6800	89×157	0.15	19.6	SAE682M89157□VA
	8200	89×157	0.15	21.6	SAE822M89157□VA
	10000	89×195	0.15	24.5	SAE103M89195□VA
	12000	89×235	0.15	27.3	SAE123M89235□VA
	15000	89×235	0.15	30.5	SAE153M89235□VA
18000	100×220	0.15	33.4	SAE183M00220□VA	
22000	100×260	0.15	38.7	SAE223M00260□VA	
500 (550)	1000	51×115	0.20	5.3	SAC102M51115□VA
	1200	51×115	0.20	5.8	SAC122M51115□VA
	1500	51×130	0.20	6.8	SAC152M51130□VA
	1800	64×115	0.20	8.1	SAC182M64115□VA
	2200	64×130	0.20	9.4	SAC222M64130□VA
	2700	76×115	0.20	10.9	SAC272M76115□VA
	3300	76×130	0.20	12.4	SAC332M76130□VA

WV _{DC} (Surge Voltage) (V)	Cap (μ F)	Size D×L (mm)	tan δ 20°C/120Hz	Ripple Current 85°C/120Hz (Arms)	Catalog Part Number
500 (550)	3900	76×130	0.20	13.4	SAC392M76130□VA
	4700	76×155	0.20	15.9	SAC472M76155□VA
	5600	89×157	0.20	17.7	SAC562M89157□VA
	6800	89×170	0.20	20.3	SAC682M89170□VA
	8200	76×220	0.20	21.7	SAC822M76220□VA
	10000	89×235	0.20	26.9	SAC103M89235□VA
550 (600)	1000	51×130	0.20	5.2	SAZ102M51130□VA
	1200	51×130	0.20	5.7	SAZ122M51130□VA
	1500	64×115	0.20	6.9	SAZ152M64115□VA
	1800	76×95	0.20	7.6	SAZ182M76095□VA
	2200	76×115	0.20	8.5	SAZ222M76115□VA
	2700	76×130	0.20	10.0	SAZ272M76130□VA
	3300	89×130	0.20	11.7	SAZ332M89130□VA
	4700	89×157	0.20	15.0	SAZ472M89157□VA
	5600	89×170	0.20	17.1	SAZ562M89170□VA
	6800	89×195	0.20	19.5	SAZ682M89195□VA
8200	89×220	0.20	23.6	SAZ822M89220□VA	
10000	89×250	0.20	25.3	SAZ103M89250□VA	
600 (650)	1000	64×80	0.20	6.2	SAB102M64080□VA
	1200	64×95	0.20	6.7	SAB122M64095□VA
	1500	64×115	0.20	8.0	SAB152M64115□VA
	1800	76×95	0.20	9.6	SAB182M76095□VA
	2200	76×115	0.20	11.5	SAB222M76115□VA
	2700	76×130	0.20	12.1	SAB272M76130□VA
	3300	76×155	0.20	15.3	SAB332M76155□VA
	3900	76×195	0.20	18.4	SAB392M76195□VA
	4700	89×157	0.20	19.2	SAB472M89157□VA
	5600	89×195	0.20	22.0	SAB562M89195□VA
6800	89×220	0.20	24.0	SAB682M89220□VA	
650 (700)	1000	64×115	0.20	6.0	SAA102M64115□VA
	1200	64×130	0.20	6.9	SAA122M64130□VA
	1500	76×115	0.20	8.1	SAA152M76115□VA
	1800	76×130	0.20	9.5	SAA182M76130□VA
	2200	76×155	0.20	10.6	SAA222M76155□VA
	2700	89×130	0.20	12.5	SAA272M89130□VA
	3300	89×157	0.20	14.5	SAA332M89157□VA
	3900	89×170	0.20	16.0	SAA392M89170□VA
	4700	89×195	0.20	18.6	SAA472M89195□VA
	5600	89×220	0.20	21.4	SAA562M89220□VA
700 (750)	1000	64×130	0.20	5.2	SA5102M64130□VA
	1200	76×115	0.20	5.9	SA5122M76115□VA
	1500	76×130	0.20	6.9	SA5152M76130□VA
	1800	76×155	0.20	8.2	SA5182M76155□VA
	2200	89×157	0.20	9.9	SA5222M89157□VA
	2700	89×170	0.20	11.5	SA5272M89170□VA
	3300	89×195	0.20	13.1	SA5332M89195□VA
	3900	89×220	0.20	15.0	SA5392M89220□VA
	820	64×115	0.20	4.5	SA6821M64115□VA
	1000	64×130	0.20	5.3	SA6102M64130□VA
1200	76×115	0.20	6.0	SA6122M76115□VA	
1500	76×145	0.20	7.1	SA6152M76145□VA	
1800	76×170	0.20	8.4	SA6182M76170□VA	
2200	76×195	0.20	10.2	SA6222M76195□VA	
2700	89×170	0.20	11.8	SA6272M89170□VA	
3300	89×195	0.20	13.4	SA6332M89195□VA	

*产品编码中□内为产品端子引出型式代码

*□Enter the appropriate terminal code

*记载之外的体积，请另行咨询。

*Please ask for advice for other sizes.

*铝电解电容器由于承受纹波电流而发热，随着温升而发生性能劣化。请在使用中降低产品承受的纹波电流。

*Aluminum electrolytic capacitor will emit heat when ripple current is applied, the performance will deteriorate when temp. rises. Please reduce the ripple current when using capacitor.

Note: All design and specification are for reference only and is subject to change without prior notice. If any doubt about safety for your application, please contact KNSCHA immediately for technical assistance before purchase.

备注：以上所提供的设计及特性参数仅供参考，任何修改不作预先通知。如果在使用上有疑问，请再购买前与科尼盛联系，以便我们提供技术上的服务和协助。